

UP AND RUNNING WITH INTELLIHANCE 3.0

Quick Enhance

Just one click to better images. Intellihance knows that some images need more enhancement than others, and it knows what areas of any image to affect.

Preference Settings

Customize the way Intellihance works with your images by telling the software what you like to see in your pictures.

Fine Tune

For modifying an image directly, Fine Tune provides tools that go far beyond typical image processing to give you perfect results every time.

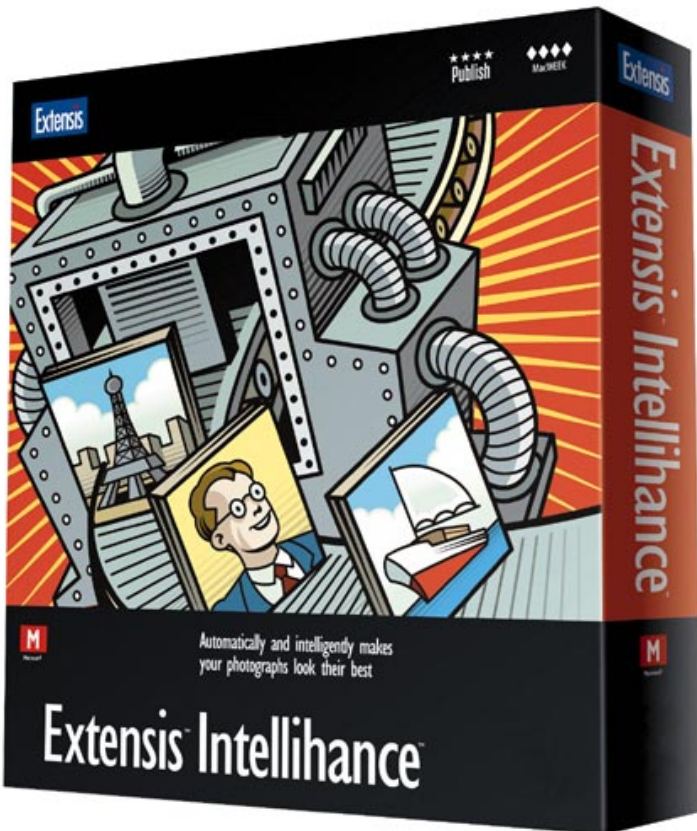
WELCOME TO EXTENSIS INTELLIHANCE

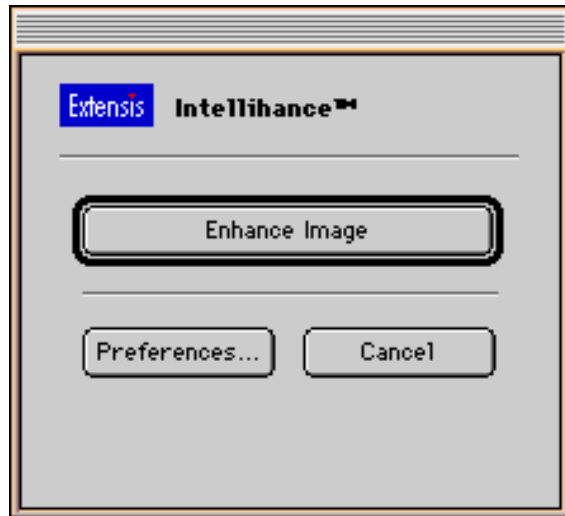
EXTENSIS INTELLIHANCE

Extensis Intellihance for Macintosh and Windows, automatically and intelligently makes your images look their best. Simple, yet powerful, Intellihance analyzes your images individually by adjusting contrast, brightness, saturation, sharpness, color cast removal, descreening and despeckle. For hands-on control, Intellihance's fine-tune capabilities let you enhance your images one adjustment at a time in a simple, easy to use dialog. Intellihance makes you image editing application work for you. It's like having your own personal image enhancement expert inside your computer.

HOW CAN THIS QUICKSTART GUIDE HELP ME?

Use this guide as a quick way to get "up and running." View each of the pages in this guide. When you're finished, you'll know enough about Intellihance to make image enhancement easier and more productive. To learn more about Intellihance refer to your Intellihance User Manual and the ReadMe files found in your Intellihance application folder.





With just one click, the Quick Enhance button automatically and intelligently looks at each image individually to determine what corrections are needed, and applies those corrections instantly.

USING THE QUICK ENHANCE DIALOG BOX

Choose the portion of your image (or select nothing to affect the entire image) you wish to enhance.

Choose Filter⇨Extensis⇨Intellihance 3.0.

The Quick Enhance dialog box appears.

Click the Enhance Image button.

The Image will be enhanced.

Below, an image is shown before (left) and after (right) Intellihance 3.0 is applied.



Before



After

Intellihance's preference settings allow you to customize exactly how you want your images to be enhanced by setting "target" preference settings.

CHANGING INTELLIHANCE PREFERENCES

Open a typical image that hasn't been enhanced by Intellihance.

Choose Filter⇨Extensis⇨Intellihance 3.0.

The Quick Enhance dialog box appears.

Click the Preferences button.

The Preferences dialog box appears, with all sorts of pop-up menus and controls, and a resizable, zoomable preview.

Change any of the preferences that you wish to modify, noting how they affect your "typical" image.

THE PREFERENCE SETTINGS:

Descreen: Images that have already been printed using a halftone screening process require special attention when re-used by scanning them. The dots that make up the printed image are often partially or wholly visible, creating an undesirable pattern and possibly a moire when viewed on screen or printed again. The Descreen option blurs the dots slightly, blending the individual colors used in printing.

Contrast: The Contrast Settings are used to increase the contrast of images. Even the lowest setting will modify the contrast slightly. Keep in mind that these settings are target settings, and a low setting may appear to do much more on a low contrast image than on a high contrast image. The contrast, even on the lowest setting, will never decrease.

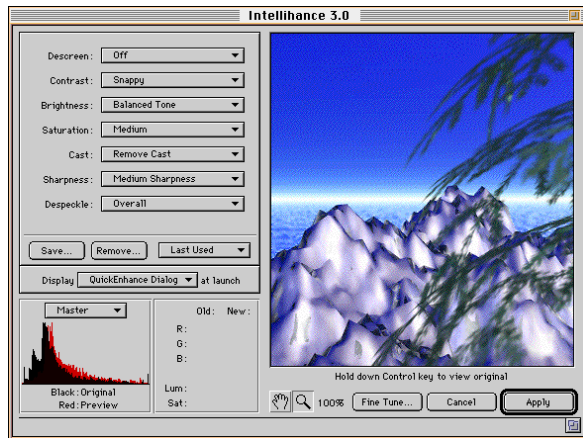
Brightness: The Brightness setting biases the automatic adjustment of the midtone of the image.

Saturation: Saturation is the amount of color within the image. The settings will increase or decrease the saturation based on the current setting.

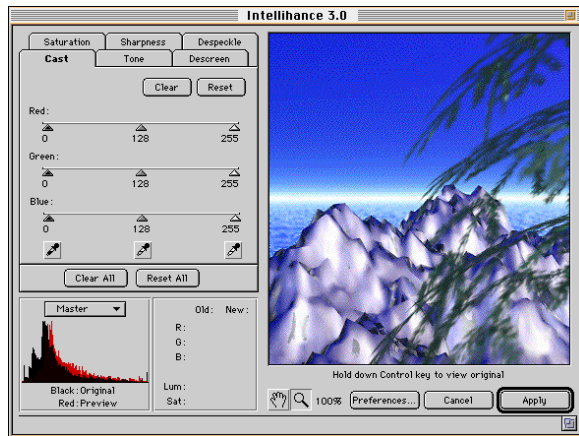
Cast: The Cast setting is used to remove unwanted color casts from the image. Oftentimes, over or underexposed film will result in images that have a yellow, red, or green cast to them. This is also potentially a problem when a scanner is improperly calibrated or when a picture was taken under fluorescent lights.

Sharpness: The sharpness setting selectively sharpens any images that require it. It will not reduce the amount of sharpness in an image that is too sharp, however. Once again, Intellihance "sees" the image and recognizes the areas in terms of sharpness, affecting the least sharp areas the most, and the most sharp areas the least.

Despeckle: The Despeckle filter removes noise, such as photograin or scanner-induced noise, while preserving detail. Intellihance detects the edges in an image (the areas where significant color changes occur) and gently smooths all of the selection except those edges.



In addition to setting general preferences to control how IntelliHance automatically enhances images, you can adjust settings for individual images using the Fine Tune controls within the IntelliHance environment.



USING THE FINE TUNE CONTROLS

Open the image that you want to modify using IntelliHance's Fine Tune controls.

Choose Filter→Extensis→IntelliHance 3.0.

The Quick Enhance dialog box appears.

Click the Preferences button.

The Preferences dialog box appears.

Click the Fine Tune button.

The Fine Tune screen appears, with six tabbed panels that allow you to modify specific areas within an image.

THE FINE TUNE CONTROLS:

Cast: You can fine tune cast removal by adjusting the amount of red, green, and blue (RGB images); cyan, magenta, and yellow (CMYK); and a and b channels (Lab color) that are contained within shadows, midtones, and highlights by manipulating the sliders in the Cast tab of the Fine tune screen.

Tone: Tone is the Fine Tune equivalent of Brightness and Contrast mixed together. The tone panel lets you adjust the output tone of the shadows, midtones, and highlights of an image.

Descreen: Descreen helps remove traces of the dots used when printing that show up in scanned images. It accomplishes this by blending a blurred image with the original image. This helps to fill in any gaps and to cover up noticeable colored dots while still maintaining detail.

Saturation: Saturation controls the amount of color within the selected area of the image. The further the slider is dragged to the right, the more color (intensity) is added to the image. Dragging the slider to the left will result in an unsaturated image that is basically a grayscale image.

Sharpness: Sharpness controls the sharpness of the image.

Despeckle: The Despeckle control removes unwanted tiny pixels from larger solid areas.